

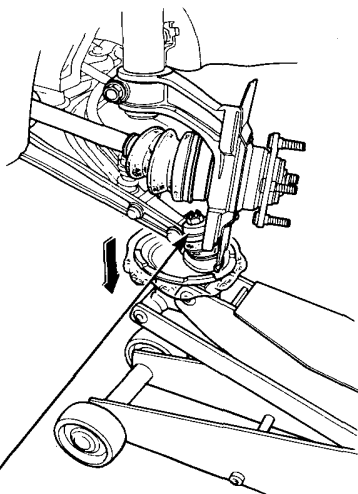
# Driveshafts

## Removal

1. Loosen the front wheel spindle nut with a 32 mm socket wrench.
2. Raise the front end of the car and support it with safety stands (see page 1-7 for the proper locations for the stands).
3. Drain the transmission oil. (Page 5-3)
4. Remove the front wheel and the spindle nut.
5. Use a floor jack to support the lower control arm, then remove the ball joint cotter pin and nut.

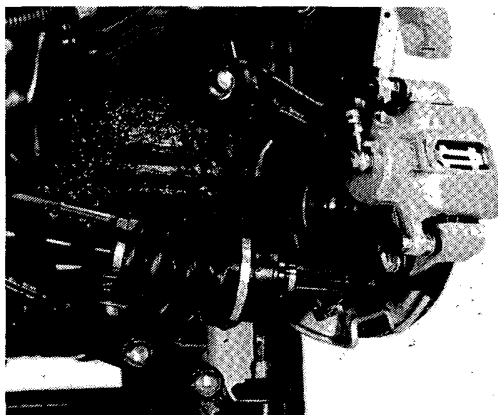
**CAUTION:** Make sure that the floor jack is positioned securely under the lower control arm, at the ball joint. Otherwise, torsion bar tension on the lower control arm will cause the arm to jump or spring suddenly away from the hub as the ball joint puller is being used.

6. Separate the ball joint from the front hub with the ball joint puller.
7. Slowly, lower the floor jack to lower the control arm.



LOWER ARM BALL JOINT

8. Pull the front hub outward, all the way off the driveshaft.

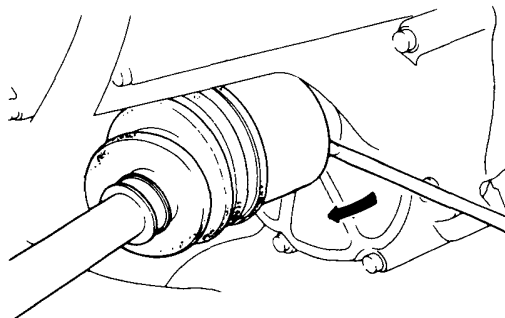
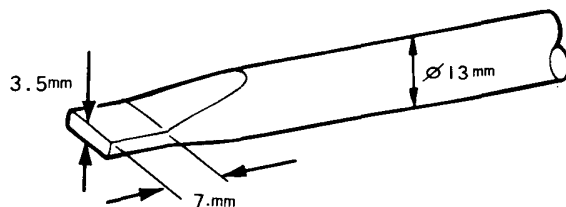


9. Using a tool like the one described below, pry out the inboard CV joint approximately 12 mm (1/2 in) in order to force the spring clip out of the groove in the differential side gears.

### CAUTION:

- Pry carefully to avoid damaging the oil seal.
- Do not pull on the inboard CV joint; it may come apart.

10. Pull the driveshaft out of the transmission case.

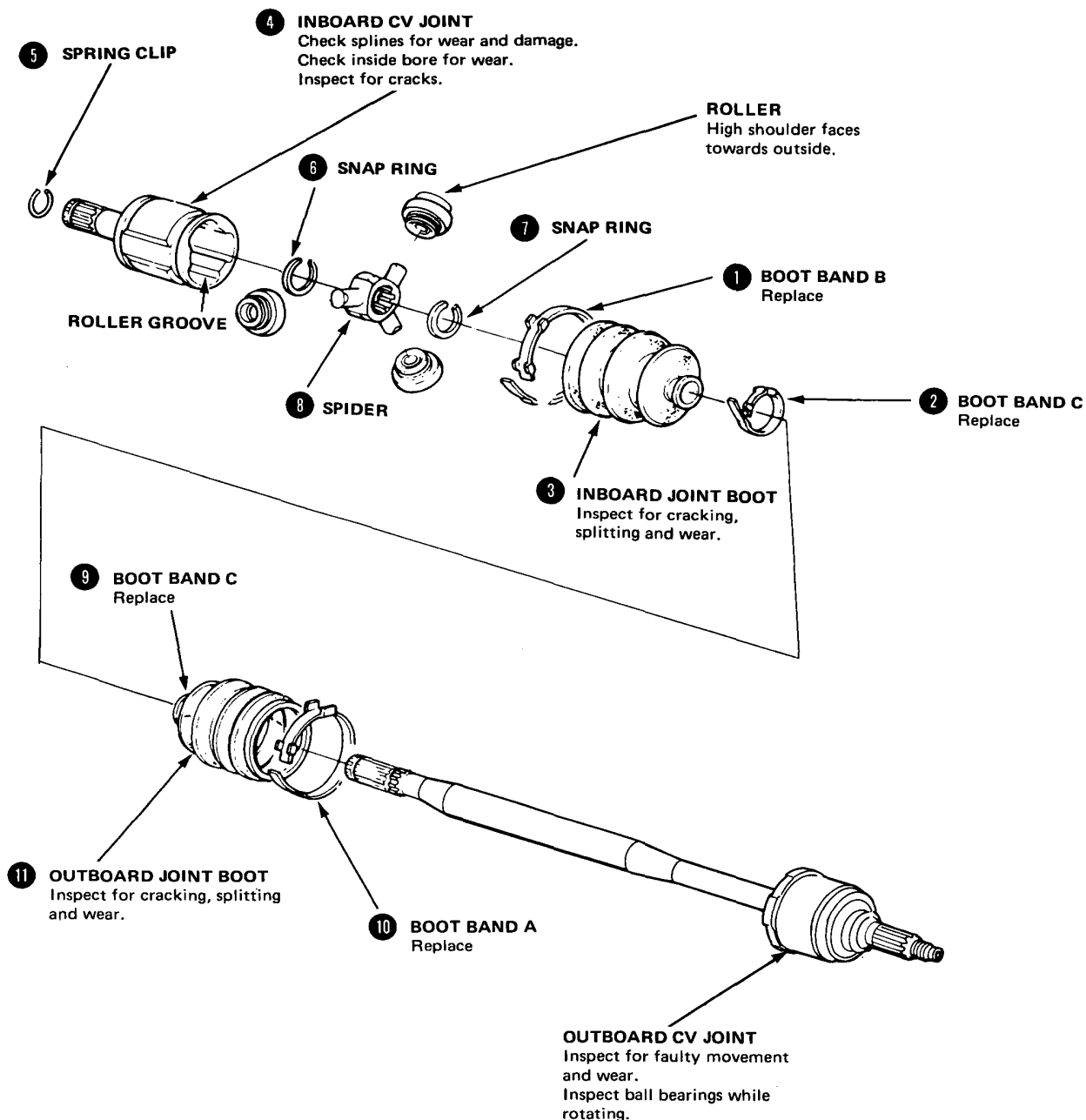




## Disassembly/Inspection: Roller type joint

Disassemble in numbered sequence.

NOTE: Mark the rollers and roller grooves during disassembly to ensure proper positioning during reassembly.



# Driveshafts

## Reassembly : Roller type joint

1. Reassemble the driveshafts in reverse order of disassembly.

**GREASE** Thoroughly pack the bearings and both the inboard and outboard CV joints with high quality molybdenum disulfide grease when reassembling the driveshaft.

2. Install the rollers and bearing races on the spider shafts, then slide the spider assembly into the inboard shaft joint.  
**CAUTION: Avoid getting oil or grease on the rubber parts.**

3. Slide the boots into place and install new boot bands C on the small ends. Position the bands so they are centered between the locating humps at each end of the driveshaft. Expand and compress the boots until they return to their normal shape and length.

